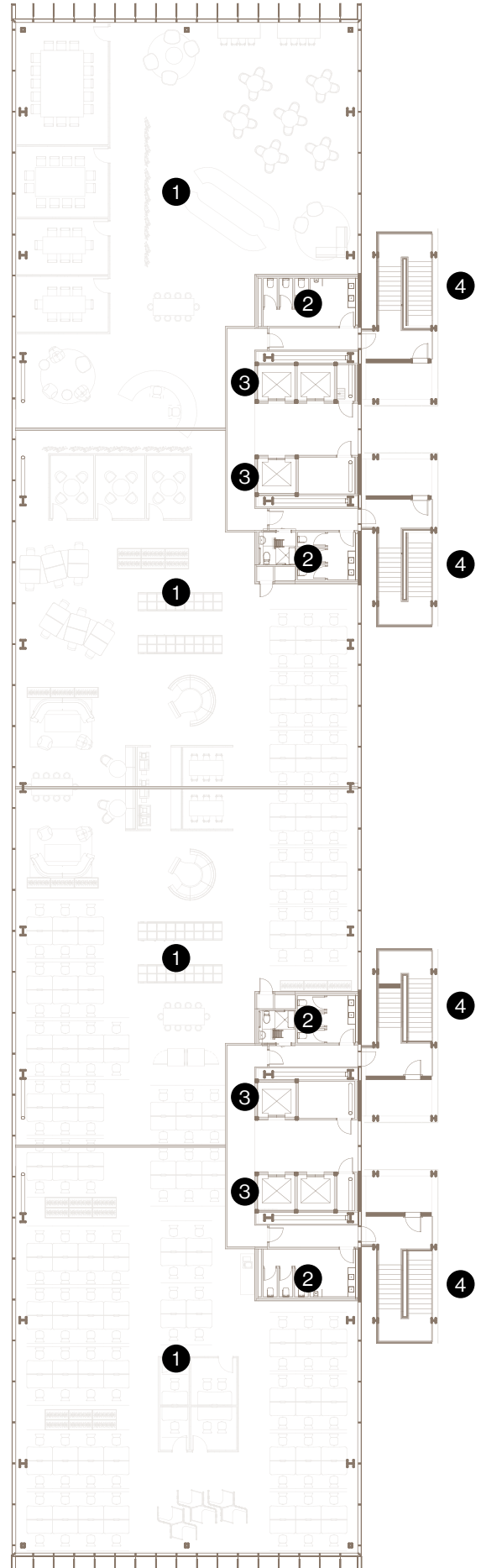


Level 4

1750m²

With the option of up to four different tenancies, we can tailor the space to suit your unique needs. Please note that the floorplan showcases indicative layouts only, providing a glimpse of the possibilities that await your business. Floor spaces can be tailored to suit.



- 1 Tenant space
- 2 Toilets
- 3 Elevators
- 4 Emergency stairs